

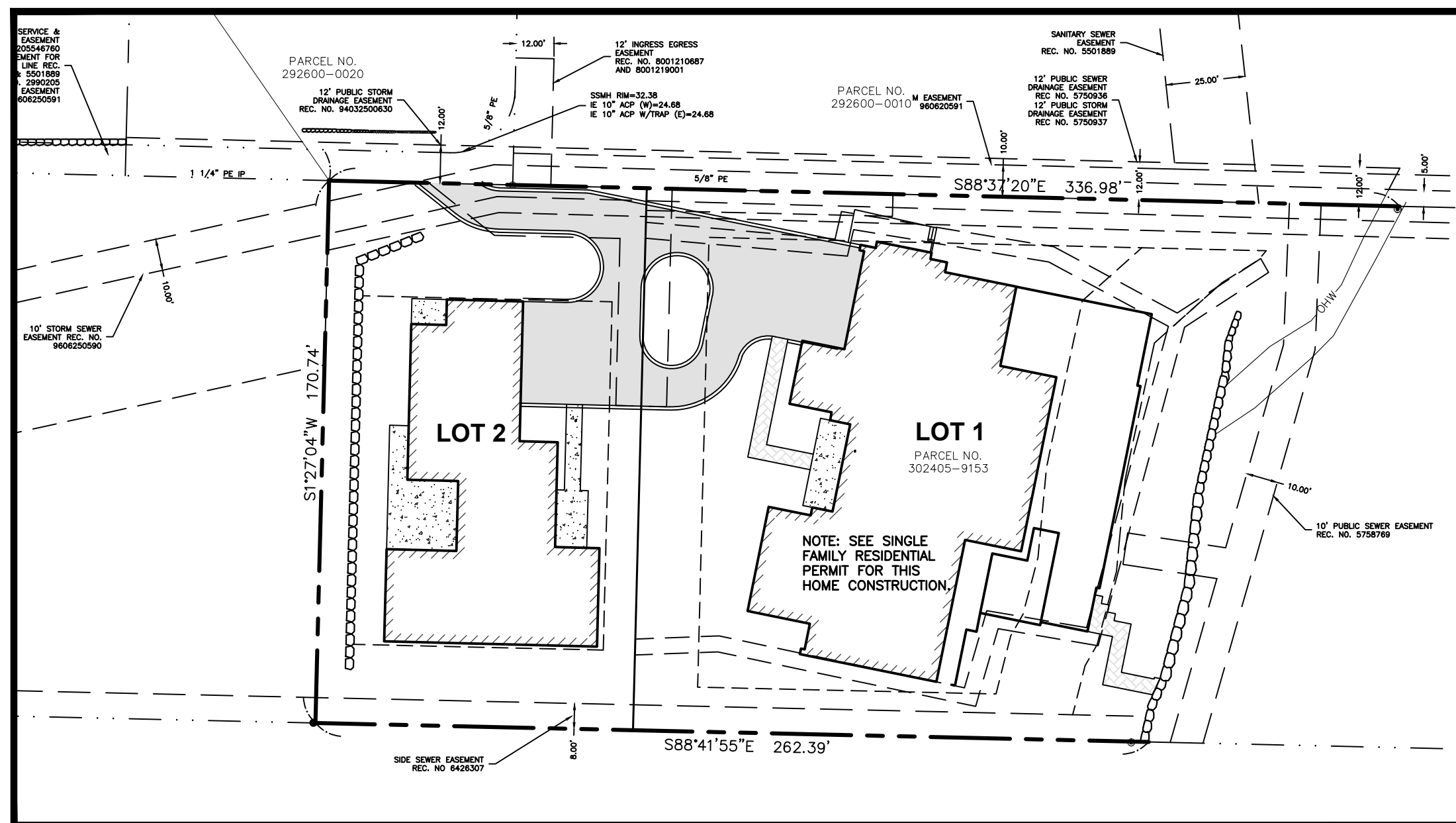
PORTION OF: NE1/4, NE1/4, SECTION 30, T.24N., R5E., W.M.

KONERU SHORT PLAT, SUB21-008

6610 EAST MERCER WAY MERCER ISLAND, WA. 98040

PROJECT CONTACTS	
OWNER/APPLICANT:	DHEERAJ KONERU
	7002 93RD AVENUE SE MERCER ISLAND, WA 98040
ENGINEER/SURVEY:	PACE ENGINEERS, INC.
	11255 KIRKLAND WAY, SUITE 300 KIRKLAND, WA 98033 JOHN ANDERSON, PE BILL HAWKINS, PLS PHONE: (425) 827-2014 EMAIL: JOHNA@PACEENGRS.COM BILLH@PACEENGRS.COM
ARBORIST:	TREE 133, LLC
	12408 17TH AVENUE NE SEATTLE, WA. 98125 CRAIG BACHMANN, CERTIFIED ARBORIST PHONE: (206) 745-0473 EMAIL: ARBORIST@TREE133.COM
GEOTECHNICAL:	GEOTECH CONSULTANTS, INC.
	2401 10TH AVENUE E. SEATTLE, WA 98102 MARC MCGINNIS, PE PHONE: (425) 747-5618 EMAIL:

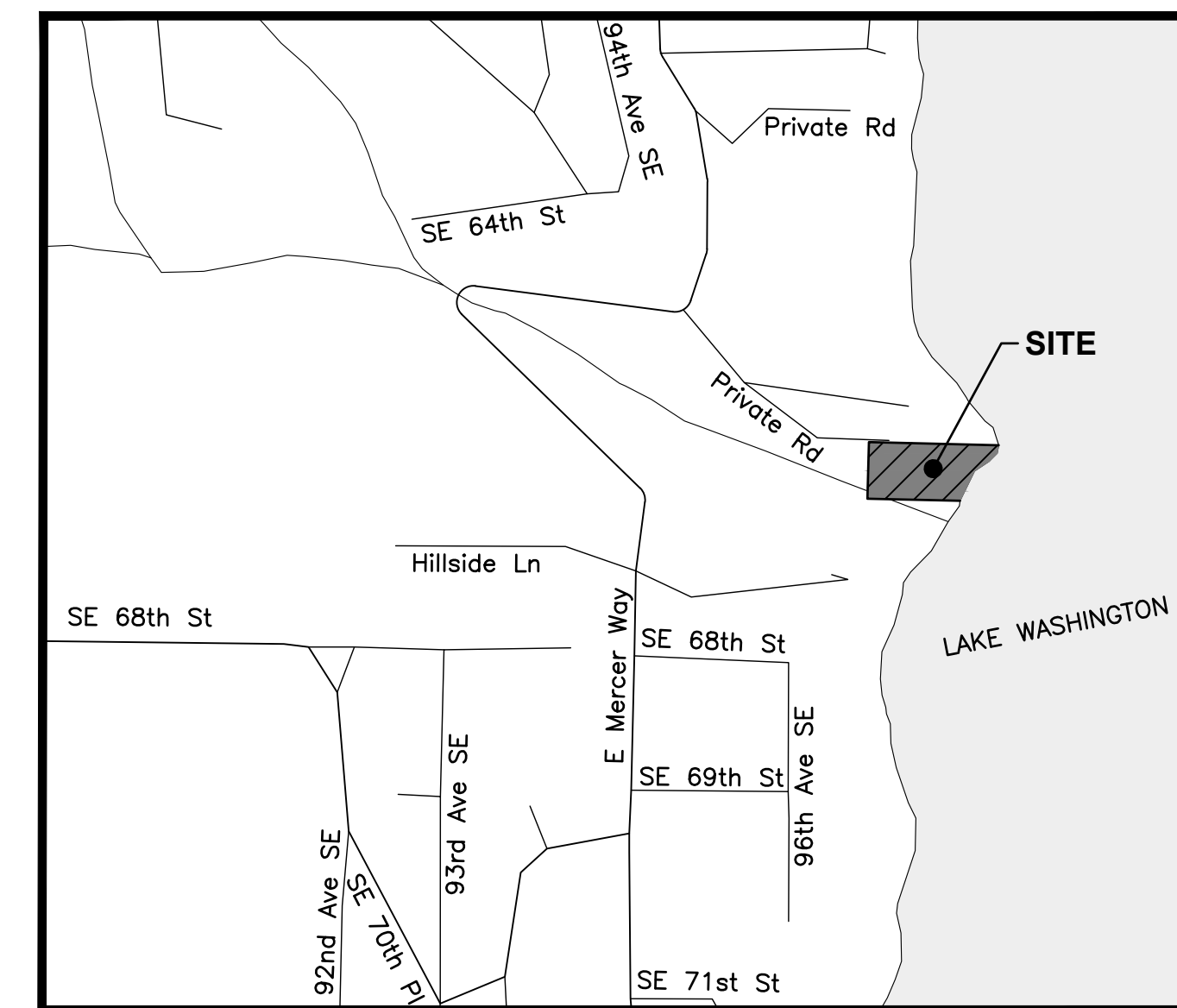
PROJECT INFORMATION	
SITE DATA	
ADDRESS:	6610 EAST MERCER WAY
PARCEL NUMBER:	3024059153
PARCEL AREA:	50,094 SF
LEGAL DESCRIPTION:	THE SOUTH HALF OF THAT PORTION OF GOVERNMENT LOT 1, SECTION 30, TOWNSHIP 24 NORTH, RANGE 5 EAST, LYING BETWEEN THE NORTH 498 FEET THEREOF AND SOUTH 471 FEET THEREOF AND EASTERLY OF A LINE PARALLEL WITH AND 1588.78 FEET EASTERLY OF (MEASURED AT RIGHT ANGLES TO) THE WEST LINE OF THE NORTHEAST QUARTER OF SAID SECTION 30; EXCEPT THE SOUTH 9 FEET THEREOF.
	TOGETHER WITH SHORELANDS OF THE SECOND CLASS IN FRONT AND ABUTTING UPON SAID PORTION OF SADI GOVERNMENT LOT 1.
	TOGETHER WITH AN EASEMENT FOR UNOBSTRUCTED INGRESS AND EGRESS OVER THE EXISTING PRIVATE ROADWAY EXTENDING NORTHWESTERLY TO EAST MERCER WAY APPURTENANT TO THE PROPERTY HEREBY CONVEYED.
	SITUATE IN THE CITY OF MERCER ISLAND, COUNTY OF KING, STATE OF WASHINGTON
ZONING SUMMARY	
EXISTING ZONING:	R-15
MINIMUM LOT SIZE:	15,000 SQ. FT.
MAXIMUM HEIGHT:	30' ABOVE ABE
MAX. LOT COVERAGE: (40% OF LOT AREA)	LOT 1 13,591 SQ. FT. LOT 2 6,826 SQ. FT.
MAX. HARDSCAPE: (9% OF LOT AREA)	LOT 1 3,058 SQ. FT. LOT 2 1,536 SQ. FT.
MAX GROSS FLOOR AREA:	LOT 1 12,000 SQ. FT. (MAX ALLOWED) LOT 2 6,826 SQ. FT. (40% OF LOT AREA)
BUILDING SETBACKS	
SIDE:	SUM 15' WITH 5' MIN.
REAR:	25
FRONT:	20



SITE MAP
SCALE: 1"=40'

PROJECT INFORMATION			
DEVELOPMENT SUMMARY			
PROPOSED NUMBER LOTS:	2		
NUMBER OF DWELLING UNITS:	2		
GROSS SITE AREA:	50,094	SQ. FT.	
NET SITE AREA:	50,094	SQ. FT.	
LOT SIZE:	LOT 1 33,978	SQ. FT. *	
	LOT 2 17,067	SQ. FT.	
GROSS DENSITY:	1.73	DU/AC	
NET DENSITY:	1.73	DU/AC	
EXISTING IMPERVIOUS AREA:	9,862	SQ. FT.	
PROPOSED IMPERVIOUS AREA:	LOT 1 12,000	SQ. FT.	
	LOT 2 7,785	SQ. FT.	
LOT WIDTH:	LOT 1 100	FT.	
	LOT 2 162	FT. (MIN)	
LOT DEPTH:	LOT 1 = LOT 2 = 171	FT.	
PARKING SPACES:	COVERED	UNCOVERED	
	LOT 1 3	3	
	LOT 2 3	3	
LOT SLOPE:	6.6%		

* LIMIT SUBDIVISION WITH NOTE ON TITLE



VICINITY MAP
1"=500'

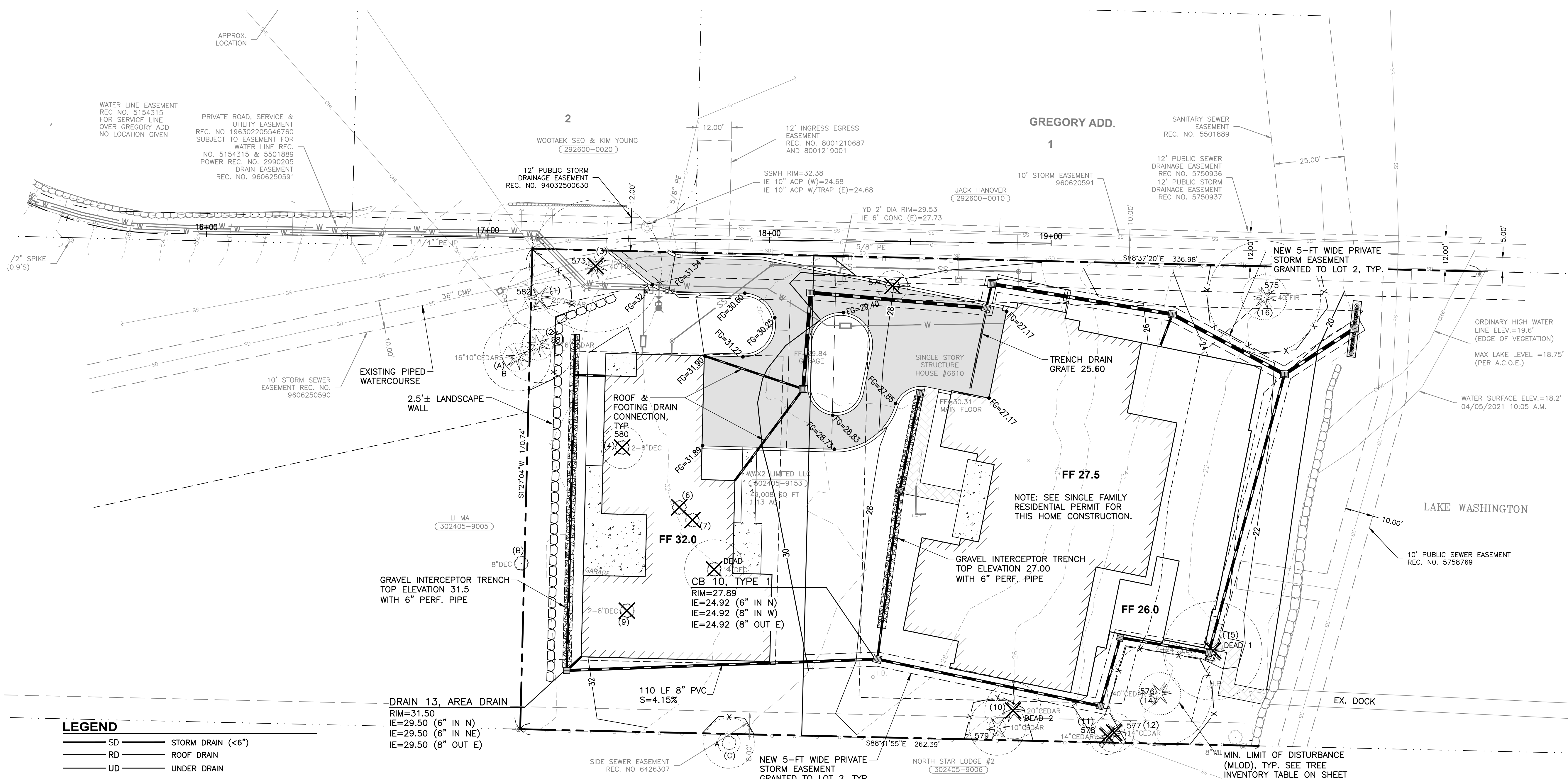
SHEET INDEX	
SHEET NO.	SHEET TITLE
C0.0	COVER SHEET
C0.1	EXISTING CONDITIONS
C1.0	PRELIMINARY SHORT PLAT
C2.0	GRADING & DRAINAGE PLAN
C3.0	COMPOSITE UTILITY PLAN
L1.0	TREE RETENTION PLAN
CITY OF MERCER ISLAND FILE NUMBER	
PRE-SUBMITTAL CONFERENCE NUMBER:	PRE21-023
UTILITY PURVEYORS	
WATER:	CITY OF MERCER ISLAND
SEWER:	CITY OF MERCER ISLAND
ELECTRICITY:	PUGET SOUND ENERGY
GAS:	PUGET SOUND ENERGY
TELEPHONE:	CENTURY LINK
CABLE:	CENTURY LINK/XFINITY
SCHOOL DISTRICT:	MERCER ISLAND SCHOOL DISTRICT
EARTHWORK SUMMARY	
APPROX. CUT	464 CY
APPROX. FILL	1251 CY
NET	787 CY FILL

THIS REQUEST DOES NOT GUARANTEE THAT THE LOTS WILL BE SUITABLE FOR DEVELOPMENT NOW OR IN THE FUTURE. THE LEGAL TRANSFER OF THE PROPERTY MUST BE DONE BY SEPARATE INSTRUMENT UNLESS ALL LOTS HEREIN ARE UNDER THE SAME OWNERSHIP. ALL BUILDINGS ARE SUBJECT TO MEETING THE CURRENT FIRE CODE REQUIREMENTS AT THE TIME OF THE PERMIT SUBMITTAL. ACCESS SHALL BE PROVIDED AS OUTLINED IN THE INTERNATIONAL FIRE CODE APPENDIX D AS ADOPTED AND/OR AMENDED AND MICC 19.09.40. FIRE PLAN REVIEWS WILL BE CONDUCTED AT THE TIME OF BUILDING PERMIT SUBMITTAL AND MAY REQUIRE ADDITIONAL FIRE PROTECTION SYSTEMS AND/OR FIRE PREVENTION MEASURES FOR PERMIT APPROVAL.

**CALL BEFORE
YOU DIG 8-11**
UNDERGROUND SERVICE (USA)

REVISION	DATE
2	REVISE TREE INVENTORY TABLE; TREE NUMBERING. SITE PLAN 3/16/23
1	RESPONSE TO CITY COMMENTS
	4/12/22
<p>11255 Kirkland Way, Suite 300 Kirkland, WA 98033 p. 425.827.2014 f. 425.827.5043 Civil / Structural / Planning / Survey www.paceengrs.com</p>	
<p>JOHN B. ANDERSON STATE OF WASHINGTON 2008 REGISTERED PROFESSIONAL ENGINEER</p>	
<p>DHEERAJ KONERU 7002 93RD AVENUE SE MERCER ISLAND, WA 98040</p>	
<p>KONERU SHORT PLAT (21-008) 6610 EAST MERCER WAY MERCER ISLAND, WA 98040</p>	<p>COVER SHEET</p>
<p>VERIFY SCALE BAR IS ONE INCH ON ORIGINAL DRAWING. IF NOT ONE INCH ON THIS SHEET, ADJUST SCALES ACCORDINGLY.</p>	
SCALE:	DATE:
AS SHOWN	07/20/21
DESIGNED BY:	CHECKED BY:
MA	JA
PACE PROJECT NO. 21436.00	
SHEET	C0.0

FILE NAME: P:\WORK\21-008\KONERU_SHORT_PLAT\DRAWINGS\21-008-C0-001.DWG
USER: JBA
DATE: 7/16/2023 1:41 PM
PLOT TIME: 3/16/2023 1:41 PM
PLOT FILE: P:\WORK\21-008\KONERU_SHORT_PLAT\DRAWINGS\21-008-C0-001.PLT
XREF FILES: P:\WORK\21-008\KONERU_SHORT_PLAT\DRAWINGS\21-008-C0-001.DWG; P:\WORK\21-008\KONERU_SHORT_PLAT\DRAWINGS\21-008-C0-002.DWG; P:\WORK\21-008\KONERU_SHORT_PLAT\DRAWINGS\21-008-C0-003.DWG; P:\WORK\21-008\KONERU_SHORT_PLAT\DRAWINGS\21-008-C0-004.DWG; P:\WORK\21-008\KONERU_SHORT_PLAT\DRAWINGS\21-008-C0-005.DWG; P:\WORK\21-008\KONERU_SHORT_PLAT\DRAWINGS\21-008-C0-006.DWG; P:\WORK\21-008\KONERU_SHORT_PLAT\DRAWINGS\21-008-C0-007.DWG; P:\WORK\21-008\KONERU_SHORT_PLAT\DRAWINGS\21-008-C0-008.DWG; P:\WORK\21-008\KONERU_SHORT_PLAT\DRAWINGS\21-008-C0-009.DWG; P:\WORK\21-008\KONERU_SHORT_PLAT\DRAWINGS\21-008-C0-010.DWG; P:\WORK\21-008\KONERU_SHORT_PLAT\DRAWINGS\21-008-C0-011.DWG; P:\WORK\21-008\KONERU_SHORT_PLAT\DRAWINGS\21-008-C0-012.DWG; P:\WORK\21-008\KONERU_SHORT_PLAT\DRAWINGS\21-008-C0-013.DWG; P:\WORK\21-008\KONERU_SHORT_PLAT\DRAWINGS\21-008-C0-014.DWG; P:\WORK\21-008\KONERU_SHORT_PLAT\DRAWINGS\21-008-C0-015.DWG; P:\WORK\21-008\KONERU_SHORT_PLAT\DRAWINGS\21-008-C0-016.DWG; P:\WORK\21-008\KONERU_SHORT_PLAT\DRAWINGS\21-008-C0-017.DWG; P:\WORK\21-008\KONERU_SHORT_PLAT\DRAWINGS\21-008-C0-018.DWG; P:\WORK\21-008\KONERU_SHORT_PLAT\DRAWINGS\21-008-C0-019.DWG; P:\WORK\21-008\KONERU_SHORT_PLAT\DRAWINGS\21-008-C0-020.DWG; P:\WORK\21-008\KONERU_SHORT_PLAT\DRAWINGS\21-008-C0-021.DWG; P:\WORK\21-008\KONERU_SHORT_PLAT\DRAWINGS\21-008-C0-022.DWG; P:\WORK\21-008\KONERU_SHORT_PLAT\DRAWINGS\21-008-C0-023.DWG; P:\WORK\21-008\KONERU_SHORT_PLAT\DRAWINGS\21-008-C0-024.DWG; P:\WORK\21-008\KONERU_SHORT_PLAT\DRAWINGS\21-008-C0-025.DWG; P:\WORK\21-008\KONERU_SHORT_PLAT\DRAWINGS\21-008-C0-026.DWG; P:\WORK\21-008\KONERU_SHORT_PLAT\DRAWINGS\21-008-C0-027.DWG; P:\WORK\21-008\KONERU_SHORT_PLAT\DRAWINGS\21-008-C0-028.DWG; P:\WORK\21-008\KONERU_SHORT_PLAT\DRAWINGS\21-008-C0-029.DWG; P:\WORK\21-008\KONERU_SHORT_PLAT\DRAWINGS\21-008-C0-030.DWG; P:\WORK\21-008\KONERU_SHORT_PLAT\DRAWINGS\21-008-C0-031.DWG; P:\WORK\21-008\KONERU_SHORT_PLAT\DRAWINGS\21-008-C0-032.DWG; P:\WORK\21-008\KONERU_SHORT_PLAT\DRAWINGS\21-008-C0-033.DWG; P:\WORK\21-008\KONERU_SHORT_PLAT\DRAWINGS\21-008-C0-034.DWG; P:\WORK\21-008\KONERU_SHORT_PLAT\DRAWINGS\21-008-C0-035.DWG; P:\WORK\21-008\KONERU_SHORT_PLAT\DRAWINGS\21-008-C0-036.DWG; P:\WORK\21-008\KONERU_SHORT_PLAT\DRAWINGS\21-008-C0-037.DWG; P:\WORK\21-008\KONERU_SHORT_PLAT\DRAWINGS\21-008-C0-038.DWG; P:\WORK\21-008\KONERU_SHORT_PLAT\DRAWINGS\21-008-C0-039.DWG; P:\WORK\21-008\KONERU_SHORT_PLAT\DRAWINGS\21-008-C0-040.DWG; P:\WORK\21-008\KONERU_SHORT_PLAT\DRAWINGS\21-008-C0-041.DWG; P:\WORK\21-008\KONERU_SHORT_PLAT\DRAWINGS\21-008-C0-042.DWG; P:\WORK\21-008\KONERU_SHORT_PLAT\DRAWINGS\21-008-C0-043.DWG; P:\WORK\21-008\KONERU_SHORT_PLAT\DRAWINGS\21-008-C0-044.DWG; P:\WORK\21-008\KONERU_SHORT_PLAT\DRAWINGS\21-008-C0-045.DWG; P:\WORK\21-008\KONERU_SHORT_PLAT\DRAWINGS\21-008-C0-046.DWG; P:\WORK\21-008\KONERU_SHORT_PLAT\DRAWINGS\21-008-C0-047.DWG; P:\WORK\21-008\KONERU_SHORT_PLAT\DRAWINGS\21-008-C0-048.DWG; P:\WORK\21-008\KONERU_SHORT_PLAT\DRAWINGS\21-008-C0-049.DWG; P:\WORK\21-008\KONERU_SHORT_PLAT\DRAWINGS\21-008-C0-050.DWG; P:\WORK\21-008\KONERU_SHORT_PLAT\DRAWINGS\21-008-C0-051.DWG; P:\WORK\21-008\KONERU_SHORT_PLAT\DRAWINGS\21-008-C0-052.DWG; P:\WORK\21-008\KONERU_SHORT_PLAT\DRAWINGS\21-008-C0-053.DWG; P:\WORK\21-008\KONERU_SHORT_PLAT\DRAWINGS\21-008-C0-054.DWG; P:\WORK\21-008\KONERU_SHORT_PLAT\DRAWINGS\21-008-C0-055.DWG; P:\WORK\21-008\KONERU_SHORT_PLAT\DRAWINGS\21-008-C0-056.DWG; P:\WORK\21-008\KONERU_SHORT_PLAT\DRAWINGS\21-008-C0-057.DWG; P:\WORK\21-008\KONERU_SHORT_PLAT\DRAWINGS\21-008-C0-058.DWG; P:\WORK\21-008\KONERU_SHORT_PLAT\DRAWINGS\21-008-C0-059.DWG; P:\WORK\21-008\KONERU_SHORT_PLAT\DRAWINGS\21-008-C0-060.DWG; P:\WORK\21-008\KONERU_SHORT_PLAT\DRAWINGS\21-008-C0-061.DWG; P:\WORK\21-008\KONERU_SHORT_PLAT\DRAWINGS\21-008-C0-062.DWG; P:\WORK\21-008\KONERU_SHORT_PLAT\DRAWINGS\21-008-C0-063.DWG; P:\WORK\21-008\KONERU_SHORT_PLAT\DRAWINGS\21-008-C0-064.DWG; P:\WORK\21-008\KONERU_SHORT_PLAT\DRAWINGS\21-008-C0-065.DWG; P:\WORK\21-008\KONERU_SHORT_PLAT\DRAWINGS\21-008-C0-066.DWG; P:\WORK\21-008\KONERU_SHORT_PLAT\DRAWINGS\21-008-C0-067.DWG; P:\WORK\21-008\KONERU_SHORT_PLAT\DRAWINGS\21-008-C0-068.DWG; P:\WORK\21-008\KONERU_SHORT_PLAT\DRAWINGS\21-008-C0-069.DWG; P:\WORK\21-008\KONERU_SHORT_PLAT\DRAWINGS\21-008-C0-070.DWG; P:\WORK\21-008\KONERU_SHORT_PLAT\DRAWINGS\21-008-C0-071.DWG; P:\WORK\21-008\KONERU_SHORT_PLAT\DRAWINGS\21-008-C0-072.DWG; P:\WORK\21-008\KONERU_SHORT_PLAT\DRAWINGS\21-008-C0-073.DWG; P:\WORK\21-008\KONERU_SHORT_PLAT\DRAWINGS\21-008-C0-074.DWG; P:\WORK\21-008\KONERU_SHORT_PLAT\DRAWINGS\21-008-C0-075.DWG; P:\WORK\21-008\KONERU_SHORT_PLAT\DRAWINGS\21-008-C0-076.DWG; P:\WORK\21-008\KONERU_SHORT_PLAT\DRAWINGS\21-008-C0-077.DWG; P:\WORK\21-008\KONERU_SHORT_PLAT\DRAWINGS\21-008-C0-078.DWG; P:\WORK\21-008\KONERU_SHORT_PLAT\DRAWINGS\21-008-C0-079.DWG; P:\WORK\21-008\KONERU_SHORT_PLAT\DRAWINGS\21-008-C0-080.DWG; P:\WORK\21-008\KONERU_SHORT_PLAT\DRAWINGS\21-008-C0-081.DWG; P:\WORK\21-008\KONERU_SHORT_PLAT\DRAWINGS\21-008-C0-082.DWG; P:\WORK\21-008\KONERU_SHORT_PLAT\DRAWINGS\21-008-C0-083.DWG; P:\WORK\21-008\KONERU_SHORT_PLAT\DRAWINGS\21-008-C0-084.DWG; P:\WORK\21-008\KONERU_SHORT_PLAT\DRAWINGS\21-008-C0-085.DWG; P:\WORK\21-008\KONERU_SHORT_PLAT\DRAWINGS\21-008-C0-086.DWG; P:\WORK\21-008\KONERU_SHORT_PLAT\DRAWINGS\21-008-C0-087.DWG; P:\WORK\21-008\KONERU_SHORT_PLAT\DRAWINGS\21-008-C0-088.DWG; P:\WORK\21-008\KONERU_SHORT_PLAT\DRAWINGS\21-008-C0-089.DWG; P:\WORK\21-008\KONERU_SHORT_PLAT\DRAWINGS\21-008-C0-090.DWG; P:\WORK\21-008\KONERU_SHORT_PLAT\DRAWINGS\21-008-C0-091.DWG; P:\WORK\21-008\KONERU_SHORT_PLAT\DRAWINGS\21-008-C0-092.DWG; P:\WORK\21-008\KONERU_SHORT_PLAT\DRAWINGS\21-008-C0-093.DWG; P:\WORK\21-008\KONERU_SHORT_PLAT\DRAWINGS\21-008-C0-094.DWG; P:\WORK\21-008\KONERU_SHORT_PLAT\DRAWINGS\21-008-C0-095.DWG; P:\WORK\21-008\KONERU_SHORT_PLAT\DRAWINGS\21-008-C0-096.DWG; P:\WORK\21-008\KONERU_SHORT_PLAT\DRAWINGS\21-008-C0-097.DWG; P:\WORK\21-008\KONERU_SHORT_PLAT\DRAWINGS\21-008-C0-098.DWG; P:\WORK\21-008\KONERU_SHORT_PLAT\DRAWINGS\21-008-C0-099.DWG; P:\WORK\21-008\KONERU_SHORT_PLAT\DRAWINGS\21-008-C0-100.DWG; P:\WORK\21-008\KONERU_SHORT_PLAT\DRAWINGS\21-008-C0-101.DWG; P:\WORK\21-008\KONERU_SHORT_PLAT\DRAWINGS\21-008-C0-102.DWG; P:\WORK\21-008\KONERU_SHORT_PLAT\DRAWINGS\21-008-C0-103.DWG; P:\WORK\21-008\KONERU_SHORT_PLAT\DRAWINGS\21-008-C0-104.DWG; P:\WORK\21-008\KONERU_SHORT_PLAT\DRAWINGS\21-008-C0-105.DWG; P:\WORK\21-008\KONERU_SHORT_PLAT\DRAWINGS\21-008-C0-106.DWG; P:\WORK\21-008\KONERU_SHORT_PLAT\DRAWINGS\21-008-C0-107.DWG; P:\WORK\21-008\KONERU_SHORT_PLAT\DRAWINGS\21-008-C0-108.DWG; P:\WORK\21-008\KONERU_SHORT_PLAT\DRAWINGS\21-008-C0-109.DWG; P:\WORK\21-008\KONERU_SHORT_PLAT\DRAWINGS\21-008-C0-110.DWG; P:\WORK\21-008\KONERU_SHORT_PLAT\DRAWINGS\21-008-C0-111.DWG; P:\WORK\21-008\KONERU_SHORT_PLAT\DRAWINGS\21-008-C0-112.DWG; P:\WORK\21-008\KONERU_SHORT_PLAT\DRAWINGS\21-008-C0-113.DWG; P:\WORK\21-008\KONERU_SHORT_PLAT\DRAWINGS\21-008-C0-114.DWG; P:\WORK\21-008\KONERU_SHORT_PLAT\DRAWINGS\21-008-C0-115.DWG; P:\WORK\21-008\KONERU_SHORT_PLAT\DRAWINGS\21-008-C0-116.DWG; P:\WORK\21-008\KONERU_SHORT_PLAT\DRAWINGS\21-008-C0-117.DWG; P:\WORK\21-008\KONERU_SHORT_PLAT\DRAWINGS\21-008-C0-118.DWG; P:\WORK\21-008\KONERU_SHORT_PLAT\DRAWINGS\21-008-C0-119.DWG; P:\WORK\21-008\KONERU_SHORT_PLAT\DRAWINGS\21-008-C0-120.DWG; P:\WORK\21-008\KONERU_SHORT_PLAT\DRAWINGS\21-008-C0-121.DWG; P:\WORK\21-008\KONERU_SHORT_PLAT\DRAWINGS\21-008-C0-122.DWG; P:\WORK\21-008\KONERU_SHORT_PLAT\DRAWINGS\21-008-C0-123.DWG; P:\WORK\21-008\KONERU_SHORT_PLAT\DRAWINGS\21-008-C0-124.DWG; P:\WORK\21-008\KONERU_SHORT_PLAT\DRAWINGS\21-008-C0-125.DWG; P:\WORK\21-008\KONERU_SHORT_PLAT\DRAWINGS\21-008-C0-126.DWG; P:\WORK\21-008\KONERU_SHORT_PLAT\DRAWINGS\21-008-C0-127.DWG; P:\WORK\21-008\KONERU_SHORT_PLAT\DRAWINGS\21-008-C0-128.DWG; P:\WORK\21-008\KONERU_SHORT_PLAT\DRAWINGS\21-008-C0-129.DWG; P:\WORK\21-008\KONERU_SHORT_PLAT\DRAWINGS\21-008-C0-130.DWG; P:\WORK\21-008\KONERU_SHORT_PLAT\DRAWINGS\21-008-C0-131.DWG; P:\WORK\21-008\KONERU_SHORT_PLAT\DRAWINGS\21-008-C0-132.DWG; P:\WORK\21-008\KONERU_SHORT_PLAT\DRAWINGS\21-008-C0-133.DWG; P:\WORK\21-008\KONERU_SHORT_PLAT\DRAWINGS\21-008-C0-134.DWG; P:\WORK\21-008\KONERU_SHORT_PLAT\DRAWINGS\21-008-C0-135.DWG; P:\WORK\21-008\KONERU_SHORT_PLAT\DRAWINGS\21-008-C0-136.DWG; P:\WORK\21-008\KONERU_SHORT_PLAT\DRAWINGS\21-008-C0-137.DWG; P:\WORK\21-008\KONERU_SHORT_PLAT\DRAWINGS\21-008-C0-138.DWG; P:\WORK\21-008\KONERU_SHORT_PLAT\DRAWINGS\21-008-C0-139.DWG; P:\WORK\21-008\KONERU_SHORT_PLAT\DRAWINGS\21-008-C0-140.DWG; P:\WORK\21-008\KONERU_SHORT_PLAT\DRAWINGS\21-008-C0-141.DWG; P:\WORK\21-008\KONERU_SHORT_PLAT\DRAWINGS\21-008-C0-142.DWG; P:\WORK\21-008\KONERU_SHORT_PLAT\DRAWINGS\21-008-C0-143.DWG; P:\WORK\21-008\KONERU_SHORT_PLAT\DRAWINGS\21-008-C0-144.DWG; P:\WORK\21-008\KONERU_SHORT_PLAT\DRAWINGS\21-008-C0-145.DWG; P:\WORK\21-008\KONERU_SHORT_PLAT\DRAWINGS\21-008-C0-146.DWG; P:\WORK\21-008\KONERU_SHORT_PLAT\DRAWINGS\21-008-C0-147.DWG; P:\WORK\21-008\KONERU_SHORT_PLAT\DRAWINGS\21-008-C0-148.DWG; P:\WORK\21-008\KONERU_SHORT_PLAT\DRAWINGS\21-008-C0-149.DWG; P:\WORK\21-008\KONERU_SHORT_PLAT\DRAWINGS\21-008-C0-150.DWG; P:\WORK\21-008\KONERU_SHORT_PLAT\DRAWINGS\21-008-C0-151.DWG; P:\WORK\21-008\KONERU_SHORT_PLAT\DRAWINGS\21-008-C0-152.DWG; P:\WORK\21-008\KONERU_SHORT_PLAT\DRAWINGS\21-008-C0-153.DWG; P:\WORK\21-008\KONERU_SHORT_PLAT\DRAWINGS\21-008-C0-154.DWG; P:\WORK\21-008\KONERU_SHORT_PLAT\DRAWINGS\21-008-C0-155.DWG; P:\WORK\21-008\KONERU_SHORT_PLAT\DRAWINGS\21-008-C0-156.DWG; P:\WORK\21-008\KONERU_SHORT_PLAT\DRAWINGS\21-008-C0-157.DWG; P:\WORK\21-008\KONERU_SHORT_PLAT\DRAWINGS\21-008-C0-158.DWG; P:\WORK\21-008\KONERU_SHORT_PLAT\DRAWINGS\21-008-C0-159.DWG; P:\WORK\21-008\KONERU_SHORT_PLAT\DRAWINGS\21-008-C0-160.DWG; P:\WORK\21-008\KONERU_SHORT_PLAT\DRAWINGS\21-008-C0-161.DWG; P:\WORK\21-008\KONERU_SHORT_PLAT\DRAWINGS\21-008-C0-162.DWG; P:\WORK\21-008\KONERU_SHORT_PLAT\DRAWINGS\21-008-C0-163.DWG; P:\WORK\21-008\KONERU_SHORT_PLAT\DRAWINGS\21-008-C0-164.DWG; P:\WORK\21-008\KONERU_SHORT_PLAT\DRAWINGS\21-008-C0-165.DWG; P:\WORK\21-008\KONERU_SHORT_PLAT\DRAWINGS\21-008-C0-166.DWG; P:\WORK\21-008\KONERU_SHORT_PLAT\DRAWINGS\21-008-C0-167.DWG; P:\WORK\21-008\KONERU_SHORT_PLAT\DRAWINGS\21-008-C0-168.DWG; P:\WORK\21-008\KONERU_SHORT_PLAT\DRAWINGS\21-008-C0-169.DWG; P:\WORK\21-008\KONERU_SHORT_PLAT\DRAWINGS\21-008-C0-170.DWG; P:\WORK\21-008\KONERU_SHORT_PLAT\DRAWINGS\21-008-C0-171.DWG; P:\WORK\21-008\KONERU_SHORT_PLAT\DRAWINGS\21-008-C0-172.DWG; P:\WORK\21-008\KONERU_SHORT_PLAT\DRAWINGS\21-008-C0-173.DWG; P:\WORK\21-008\KONERU_SHORT_PLAT\DRAWINGS\21-008-C0-174.DWG; P:\WORK\21-008\KONERU_SHORT_PLAT\DRAWINGS\21-008-C0-175.DWG; P:\WORK\21-008\KONERU_SHORT_PLAT\DRAWINGS\21-008-C0-176.DWG; P:\WORK\21-008\KONERU_SHORT_PLAT\DRAWINGS\21-008-C0-177.DWG; P:\WORK\21-008\KONERU_SHORT_PLAT\DRAWINGS\21-008-C0-178.DWG; P:\WORK\21-008\KONERU_SHORT_PLAT\DRAWINGS\21-008-C0-179.DWG; P:\WORK\21-008\KONERU_SHORT_PLAT\DRAWINGS\21-008-C0-180.DWG; P:\WORK\21-008\KONERU_SHORT_PLAT\DRAWINGS\21-008-C0-181.DWG; P:\WORK\21-008\KONERU_SHORT_PLAT\DRAWINGS\21-008-C0-182.DWG; P:\WORK\21-008\KONERU_SHORT_PLAT\DRAWINGS\21-008-C0-183.DWG; P:\WORK\21-008\KONERU_SHORT_PLAT\DRAWINGS\21-008-C0-184.DWG; P:\WORK\21-008\KONERU_SHORT_PLAT\DRAWINGS\21-008-C0-185.DWG; P:\WORK\21-008\KONERU_SHORT_PLAT\DRAWINGS\21-008-C0-186.DWG; P:\WORK\21-008\KONERU_SHORT_PLAT\DRAWINGS\21-008-C0-187.DWG; P:\WORK\21-008\KONERU_SHORT_PLAT\DRAWINGS\21-008-C0-188.DWG; P:\WORK\21-008\KONERU_SHORT_PLAT\DRAWINGS\21-008-C0-189.DWG; P:\WORK\21-008\KONERU_SHORT_PLAT\DRAWINGS\21-008-C0-190.DWG; P:\WORK\21-008\KONERU_SHORT_PLAT\DRAWINGS\21-008-C0-191.DWG; P:\WORK\21-008\KONERU_SHORT_PLAT\DRAWINGS\21-008-C0-192.DWG; P:\WORK\21-008\KONERU_SHORT_PLAT\DRAWINGS\21-008-C0-193.DWG; P:\WORK\21-008\KONERU_SHORT_PLAT\DRAWINGS\21-008-C0-194.DWG; P:\WORK\21-008\KONERU_SHORT_PLAT\DRAWINGS\21-008-C0-195.DWG; P:\WORK\21-008\KONERU_SHORT_PLAT\DRAWINGS\21-008-C0-196.DWG; P:\WORK\21-008\KONERU_SHORT_PLAT\DRAWINGS\21-008-C0-197.DWG; P:\WORK\21-008\KONERU_SHORT_PLAT\DRAWINGS\21-008-C0-198.DWG; P:\WORK\21-008\KONERU_SHORT_PLAT\DRAWINGS\21-008-C0-199.DWG; P:\WORK\21-008\KONERU_SHORT_PLAT\DRAWINGS\21-008-C0-200.DWG; P:\WORK\21-008\KONERU_SHORT_PLAT\DRAWINGS\21-008-C0-201.DWG; P:\WORK\21-008\KONERU_SHORT_PLAT\DRAWINGS\21-008-C0-202.DWG; P:\WORK\21-008\KONERU_SHORT_PLAT\DRAWINGS\21-008-C0-203.DWG; P:\WORK\21-008\KONERU_SHORT_PLAT\DRAWINGS\21-008-C0-204.DWG; P:\WORK\21-008\KONERU_SHORT_PLAT\DRAWINGS\21-008-C0-205.DWG; P:\WORK\21-008\KONERU_SHORT_PLAT\DRAWINGS\21-008-C0-206.DWG; P:\WORK\21-008\KONERU_SHORT_PLAT\DRAWINGS\21-008-C0-207.DWG; P:\WORK\21-008\KONERU_SHORT_PLAT\DRAWINGS\21-008-C0-208.DWG; P:\WORK\21-008\KONERU_SHORT_PLAT\DRAWINGS\21-008-C0-209.DWG; P:\WORK\21-008\KONERU_SHORT_PLAT\DRAWINGS\21-008-C0-210.DWG; P:\WORK\21-008\KONERU_SHORT_PLAT\DRAWINGS\21-008-C0-211.DWG; P:\WORK\21-008\KONERU_SHORT_PL



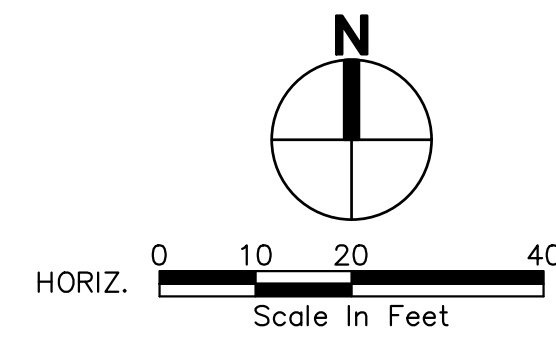
LEGEND

- | | | |
|----------|---------------------|---------------------------|
| SD | STORM DRAIN (<6") | |
| RD | ROOF DRAIN | |
| UD | UNDER DRAIN | |
| SS | EX. STORM DRAIN | |
| SS | SANITARY SEWER | |
| SS | EX. SANITARY SEWER | |
| W | WATER LINE | |
| W | EXISTING WATER LINE | |
| 20 | PROPOSED CONTOUR | |
| R | RIDGE LINE | |
| EXISTING | PROPOSED | |
| ○ | ● | AREA DRAINS |
| □ | ■ | CB TYPE 1 |
| ○ | ● | SS CLEANOUT |
| ○ | ● | SSMH 48" |
| ⊕ | ⊕ | WATER METER |
| ⊕ | ⊕ | 2 NOZZLE FIRE HYDRANT/FDC |
| ⊕ | ⊕ | 3 NOZZLE FIRE HYDRANT |
| ⊕ | ⊕ | HOSE BIB |

DRAIN 1.3, AREA DRAIN
RIM=31.50
IE=29.50 (6" IN N)
IE=29.50 (6" IN NE)
IE=29.50 (8" OUT E)

DEMO NOTE:

THE EXISTING HOUSE WILL NEED TO BE DEMOLISHED PRIOR TO PRELIMINARY SHORT PLAT APPROVAL OR A CONDITION OF APPROVAL SHALL BE ADDED STATING THAT THE EXISTING HOUSE WILL BE DEMOLISHED PRIOR TO FINAL PLAT APPLICATION

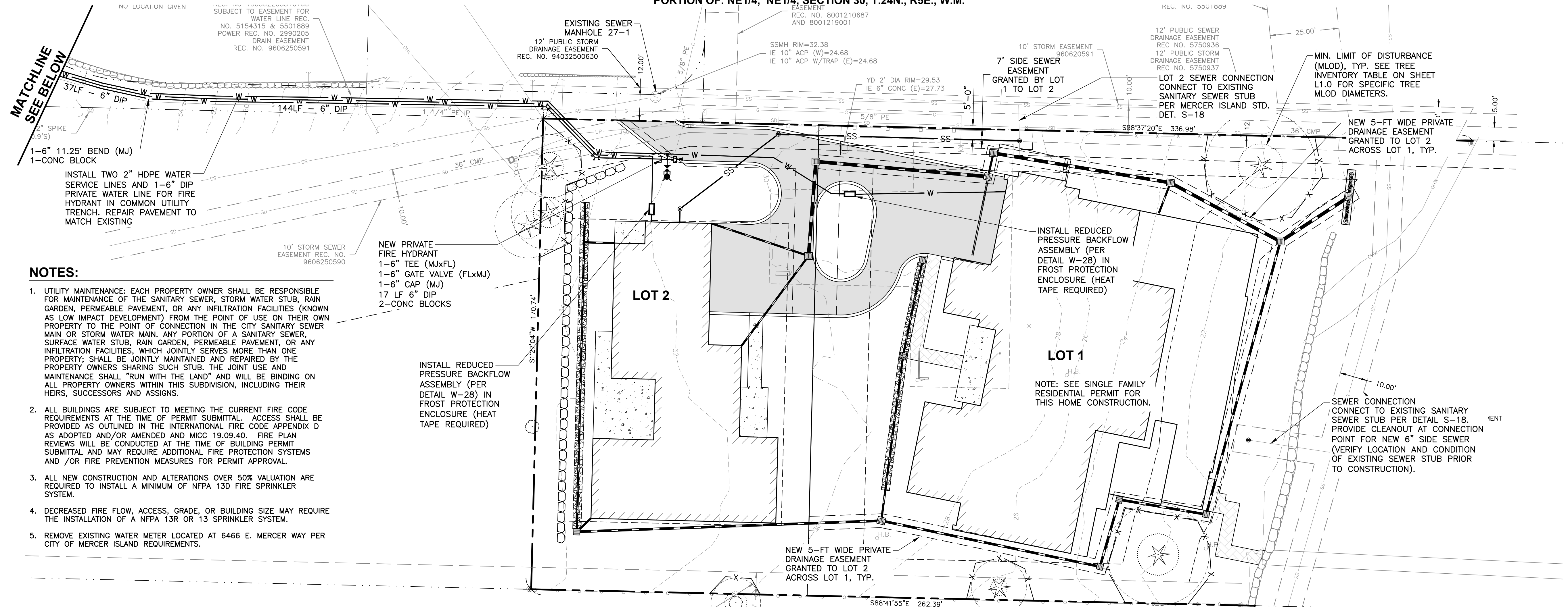


FILE NAME: P:\WORK\21436\KONERU\RESUBMIT\ENGINEERING\DRG\21436_001.DWG
 USER: JAV
 PLOT TIME: 3/16/2023 1:42 PM
 XREF FILES: 21436_SDR.dwg 21436_SRR.dwg 21436_SITE.dwg 21436_CDR.dwg 21436_CDR.dwg 21436_SSD.dwg 21436_SSD.dwg 21436_WA.dwg 21436_WA.dwg 21436_TRE.dwg 21436_TRE.dwg 9433-11-SRV.dwg

11255 Kirkland Way, Suite 300 Kirkland, WA 98033 P: 425.827.2014 F: 425.827.5043 www.paceengr.com				
DHEERAJ KONERU 7002 93RD AVENUE SE MERCER ISLAND, WA 98040				
KONERU SHORT PLAT (21-008) 6610 EAST MERCER WAY MERCER ISLAND, WA 98040				
GRADING & DRAINAGE PLAN				
VERIFY SCALE BAR IS ONE INCH ON ORIGINAL DRAWING. IF NOT ONE INCH ON THIS SHEET, ADJUST SCALES ACCORDINGLY.				
DESIGNED BY: MA		DATE: 07/20/21		
CHECKED BY: JA		DATE: 07/20/21		
PACE PROJECT NO. 21436.00				
C2.0				
SHEET				

CALL BEFORE YOU DIG 811
UNDERGROUND SERVICE (USA)

PORTION OF: NE1/4, NE1/4 SECTION 30, T.24N., R5E., W.M.



NOTES:

- UTILITY MAINTENANCE: EACH PROPERTY OWNER SHALL BE RESPONSIBLE FOR MAINTENANCE OF THE SANITARY SEWER, STORM WATER STUB, RAIN GARDEN, PERMEABLE PAVEMENT, OR ANY INFILTRATION FACILITIES (KNOWN AS LOW IMPACT DEVELOPMENT) FROM THE POINT OF USE ON THEIR OWN PROPERTY TO THE POINT OF CONNECTION IN THE CITY SANITARY SEWER MAIN OR STORM WATER MAIN. ANY PORTION OF A SANITARY SEWER, SURFACE WATER STUB, RAIN GARDEN, PERMEABLE PAVEMENT, OR ANY INFILTRATION FACILITIES, WHICH JOINTLY SERVES MORE THAN ONE PROPERTY; SHALL BE JOINTLY MAINTAINED AND REPAIRED BY THE PROPERTY OWNERS SHARING SUCH STUB. THE JOINT USE AND MAINTENANCE SHALL "RUN WITH THE LAND" AND WILL BE BINDING ON ALL PROPERTY OWNERS WITHIN THIS SUBDIVISION, INCLUDING THEIR HEIRS, SUCCESSORS AND ASSIGNS.
- ALL BUILDINGS ARE SUBJECT TO MEETING THE CURRENT FIRE CODE REQUIREMENTS AT THE TIME OF PERMIT SUBMITTAL. ACCESS SHALL BE PROVIDED AS OUTLINED IN THE INTERNATIONAL FIRE CODE APPENDIX D AS ADOPTED AND/OR AMENDED AND MICC 19.09.40. FIRE PLAN REVIEWS WILL BE CONDUCTED AT THE TIME OF BUILDING PERMIT SUBMITTAL AND MAY REQUIRE ADDITIONAL FIRE PROTECTION SYSTEMS AND /OR FIRE PREVENTION MEASURES FOR PERMIT APPROVAL.
- ALL NEW CONSTRUCTION AND ALTERATIONS OVER 50% VALUATION ARE REQUIRED TO INSTALL A MINIMUM OF NFPA 13D FIRE SPRINKLER SYSTEM.
- DECREASED FIRE FLOW, ACCESS, GRADE, OR BUILDING SIZE MAY REQUIRE THE INSTALLATION OF A NFPA 13R OR 13 SPRINKLER SYSTEM.
- REMOVE EXISTING WATER METER LOCATED AT 6466 E. MERCER WAY PER CITY OF MERCER ISLAND REQUIREMENTS.

LEGEND

SD	STORM DRAIN (<6")
RD	ROOF DRAIN
UD	UNDER DRAIN
SD	EX. STORM DRAIN
SS	SANITARY SEWER
SS	EX. SANITARY SEWER
W	WATER LINE
W	EXISTING WATER LINE
EXISTING	PROPOSED
○	AREA DRAINS
□	CB TYPE 1
○	SS CLEANOUT
○	SSMH 48"
□	WATER METER
⊙	2 NOZZLE FIRE HYDRANT/FDC

1-6"x6" TEE (MJxFL) CUT IN
1-6" GATE VALVE (FL)
1-90° BEND (FL)
1-6" ADAPTER (FLxMJ)
2-CONC BLOCKS

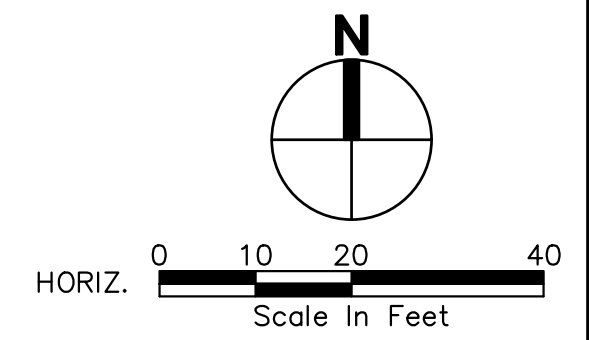
FIRE HYDRANT SUPPLY LINE
1-6" BACKFLOW DEVICE PER DETAIL W-19A LOCATED WITHIN EXISTING EASEMENT. VAULT TO HAVE A NON SLIP TRAFFIC BEARING ACCESS HATCH.
NOTE: CONTRACTOR TO PROVIDE SHOP DRAWINGS TO CITY FOR PLAN APPROVAL. FIRE SYSTEM DESIGN SHALL BE REVIEWED UNDER A SEPARATE PERMIT.

CONNECT NEW DOMESTIC WATER METERS TO EXISTING 6" MAIN USING 2" SERVICE TAP PER W-14 FOR BOTH METERS.

TWO 1" WATER METERS PER MERCER ISLAND STD. DET. W-13 (HOMES REQUIRE FIRE SUPPRESSION SYSTEMS, VERIFY SIZE OF WATER METER AND SERVICE LINE WITH FIRE SYSTEM DESIGNER PRIOR TO CONSTRUCTION)

INSTALL TWO 2" HDPE WATER SERVICE LINES AND 6" PRIVATE WATER LINE IN COMMON UTILITY TRENCH. FIELD LOCATE TRENCH IN PAVEMENT PRISM TO MINIMIZE ADJACENT TREE IMPACTS ALONG DRIVE LANE. RESTORE EXISTING PAVEMENT TO EQUAL OR BETTER CONDITION.

DEFLECT WATER LINE AT JOINT TO ACHIEVE LINE AND GRADE (MAX DEFLECTION 4 DEGREES), TYP.

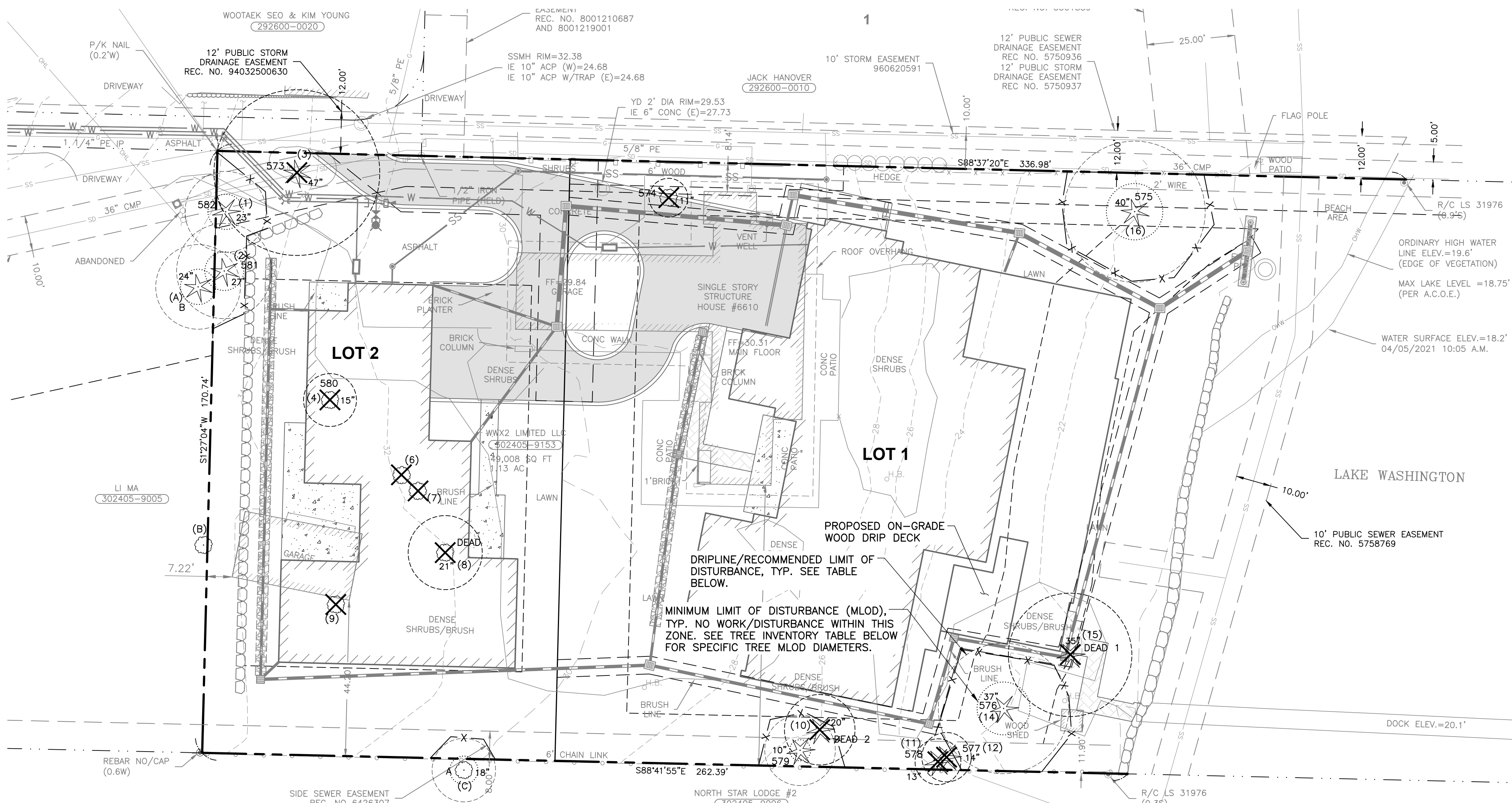


FILE NAME: P:\WP\21\21436_KONERU\RESUBMIT\ENGINEERING\DWG\ENGINEERING\21436_UT.DWG
USER: JAVIER
DATE: 07/20/21
XREF FILES: 21436_SDR.dwg; 21436_SRR.dwg; 21436_SITE.dwg; 21436_SS.dwg; 21436_SD.dwg; 21436_HATCH.dwg; 21436_SSD.dwg; 21436_TREE.dwg; 9433-11-SRR.dwg

CALL BEFORE YOU DIG 811
UNDERGROUND SERVICE (USA)

<p>11255 Kirkland Way, Suite 300 Kirkland, WA 98033 p. 425.827.2014 f. 425.827.5043 www.paceengr.com</p>	
<p>DHEERAJ KONERU 7002 93RD AVENUE SE MERCER ISLAND, WA 98040</p>	
<p>KONERU SHORT PLAT (21-008) 6610 EAST MERCER WAY MERCER ISLAND, WA 98040</p>	
<p>COMPOSITE UTILITY PLAN</p>	
<p>VERIFY SCALE BAR IS ONE INCH ON ORIGINAL DRAWING. IF NOT ONE INCH ON THIS SHEET, ADJUST SCALES ACCORDINGLY.</p>	
<p>SCALE: 1"=20'</p>	<p>DATE: 07/20/21</p>
<p>DESIGNED BY: MA</p>	<p>CHECKED BY: JA</p>
<p>PACE PROJECT NO. 21436.00</p>	
<p>SHEET C3.0</p>	
<p>2 REVISE TREE INVENTORY TABLE; TREE NUMBERING, SITE PLAN 3/16/23</p>	<p>1 RESPONSE TO CITY COMMENTS</p>
<p>SYM</p>	<p>DATE 4/12/22</p>

PORTION OF: NE1/4, NE1/4, SECTION 30, T.24N., R5E., W.M.



LEGEND

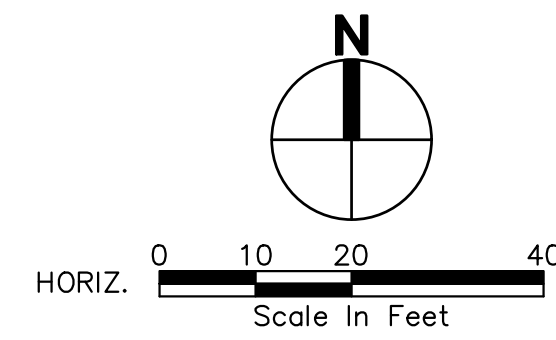
- 888 VIABLE TREE TO REMAIN
- 889 VIABLE TREE TO BE REMOVED DUE TO PROJECT OR NOT-SUITABLE TO MAINTAIN
- CONIFEROUS
- DECIDUOUS TREE
- DRIP LINE PER TABLE
- MINIMUM LIMIT OF DISTURBANCE (MLOD, SEE TREE INVENTORY FOR DIAMETERS)
- * TREE PROTECTION
- A-C TREES LOCATED OFF SITE
- ### TREE NUMBER CORRESPONDING TO TREE SOLUTIONS' INVENTORY
- (#) TREE NUMBER CORRESPONDING TO TREE133'S INVENTORY

NOTE: SEE TREE RETENTION PLAN FOR THE SINGLE FAMILY RESIDENCE PERMIT NO. 2115-250. TREE 580 IS THE ONLY ADDITIONAL TREE TO BE REMOVED, ALL OTHERS ARE ADDRESSED ON THE SFR PERMIT.

TREE INVENTORY

Tree ID	Tree 133 Report Number	Code	Scientific Name	Common Name	DSH (inches)	DSH Multistem	Health Condition	Structural Condition	Drigline Radius (feet)				Exceptional Threshold	Exceptional-Size	24-inch DSH or Greater	MLOD (feet)	RLOD (feet)	Proposed Action	Required Replacement Trees	Notes- Tree Solutions	Notes- Tree 133
									N	E	S	W									
573	3	Pme	<i>Pseudotsuga menziesii</i>	Douglas-fir	47.0		Good	Good	24.0	24.5	22.5	28.5	30.0		Yes	20	47	Remove	6	Pavement on all sides, center of drive, crown raised, end weight reduction pruning on north side, water main bored beneath tree	Tree girdled. Multiple 1/2 inch holes drilled. Bark stripped to 6 feet, not expected to survive
574	-	Cofl	<i>Comus florida</i>	Eastern Dogwood	10.7	8.8,6.1	Good	Good	6.4	8.9	11.9	12.9	12.0		Yes	6	10	Remove	2	Hollow tree, very old specimen	Tree girdled in multiple locations, not expected to survive
575	16	Pme	<i>Pseudotsuga menziesii</i>	Douglas-fir	39.5		Good	Good	21.6	19.6	23.6	25.6	30.0	Exceptional-Size	Yes	16	40	Retain	-	Top blown out repeatedly, storm damaged limbs, excellent health, soil saturated, gnarled trunk	Tree dead and partially failed at time of inventory, "Tree not picked up during Tree Solutions inventory"
576	14	Thpl	<i>Thuja plicata</i>	Western Redcedar	37.0		Fair	Good	18.5	20.5	18.5	19.5	30.0	Exceptional-Size	Yes	15	37	Retain	-	Thin canopy, drought stress	Tree girdled in multiple locations, not expected to survive
577	12	Thpl	<i>Thuja plicata</i>	Western Redcedar	14.0		Fair	Good	11.6	10.6	10.6	4.6	30.0		-	6	14	Remove	2	-	Generally good condition, growing in close proximity to tree 11
578	11	Thpl	<i>Thuja plicata</i>	Western Redcedar	13.0		Fair	Good	4.5	11.5	10.5	11.5	30.0		-	6	13	Remove	2	-	Generally good condition, growing in close proximity to tree 12
579	-	Thpl	<i>Thuja plicata</i>	Western Redcedar	10.0		Fair	Good	8.4	8.4	8.4	8.4	30.0		-	6	10	Retain	-	-	Tree dead and partially failed at time of inventory, "Tree not picked up during Tree Solutions inventory"
580	4	Maso	<i>Magnolia x soulangeana</i>	Saucer magnolia	15.0	9,12	Good	Fair	23.6	20.6	15.1	9.6	-		-	6	15	Remove	-	Phototropic sprouting, failed tree on top	Tree estimated to be below regulated size. Tree not included in retention calculations
581	2	Thpl	<i>Thuja plicata</i>	Western Redcedar	27.0		Good	Good	21.1	23.1	19.1	5.1	30.0		Yes	11	27	Retain	-	Codominant at 6' with narrow union	Generally good condition, rooted adjacent to old garage structure, anticipate asymmetric root zone
582	1	Thpl	<i>Thuja plicata</i>	Western Redcedar	23.0		Good	Good	22.0	21.0	11.0	19.0	30.0		-	10	23	Retain	-	Generally good condition, asymmetric canopy, utility pruning on west side, impermeable asphalt driveway	Overhangs from neighboring property (south), generally good condition, dsh estimated due to property boundary
Dead 1	15	Thpl	<i>Thuja plicata</i>	Western Redcedar	34.8	27,14,17	N/A	N/A	16.5	23.0	21.5	22.5	30.0	Exceptional-Size	Yes	15	N/A	Remove	6	Dead tree, clear signs of purposeful girdling, codominant at base, good candidate for wildlife snag	Overhangs from neighboring property (west), codominant beginning at 6 feet, generally good condition, dsh estimated due to blackberry brambles
Dead 2	10	Thpl	<i>Thuja plicata</i>	Western Redcedar	20.0		N/A	N/A	16.8	19.8	18.8	18.8	30.0		-	8	N/A	Remove	2	Dead tree, clear signs of purposeful girdling, funnel sticking out of tree, likely for herbicide application	Overhangs from neighboring property (west), generally good condition, dsh estimated due to blackberry brambles
5*	-	Raps	<i>Rubus pseudoacacia</i>	Black locust	11.0		-	-	-	-	-	-	-		-	6	N/A	N/A	-	Off site and estimated to be below regulated size. "Tree not included in site retention calculations"	Generally good condition, some visible deadwood, rooted on/near property line, dsh estimated due to blackberry brambles
6*	-	chp	<i>Chamaecyparis pisifera</i>	Sawara cypress	14.5		-	-	-	-	-	-	-		-	6	N/A	Remove	2	Tree failed at time of inventory, "Tree not picked up by Tree Solutions inventory"	Tree girdled in multiple locations, bark stripped to 6 feet, not expected to survive

Tree ID	Tree 133 Report Number	Code	Scientific Name	Common Name	DSH (inches)	DSH Multistem	Health Condition	Structural Condition	N	E	S	W	Exceptional Threshold	Exceptional	24-inch DSH or Greater	MLOD (feet)	RLOD (feet)	Proposed Action	Required Replacement Trees	Notes- Tree Solutions	Notes- Tree 133
7*	-	chp	<i>Chamaecyparis pisifera</i>	Sawara cypress	20.7		-	-	-	-	-	-	22.0	-	-	9	N/A	Remove	2	Tree failed at time of inventory, "Tree not picked up during Tree Solutions inventory"	Tree girdled. Multiple 1/2 inch holes drilled. Bark stripped to 6 feet, not expected to survive
8*	-	prce	<i>Prunus cerasifera</i>	Flowering Plum	20.7		-	-	-	-	-	-	22.0	-	-	9	N/A	Remove	2	Tree dead and partially failed at time of inventory, "Tree not picked up during Tree Solutions inventory"	Tree girdled in multiple locations, not expected to survive
9*	-	Raps	<i>Rubus pseudoacacia</i>	Black locust	12.7		-	-	-	-	-	-	-	-	-	6	N/A	N/A	-	Tree estimated to be below regulated size. Tree not included in retention calculations	Generally good condition, rooted adjacent to old garage structure, anticipate asymmetric root zone
A	C	Frpe	<i>Fraxinus pennsylvanica</i>	Green Ash	18.0		Good	Good	30.8	30.8	30.8	30.8	30.0	Off-site Trees				-	-	Overhangs from neighboring property (south), generally good condition, dsh estimated due to property boundary	
B	A	Thpl	<i>Thuja plicata</i>	Western Redcedar	23.7	11,21	Good	Good	15.0	13.0	19.0	21.0	30.0	-	-	10	24	Retain	-	Codominant with narrow union, part of grove with tree 582 and 581	Overhangs from neighboring property (west), generally good condition, dsh estimated due to property boundary
-	B	Raps	<i>Rubus pseudoacacia</i>	Black locust	11.0		Good	Good	-	-	-	-	-	-	-	6	24	Retain	-	not estimated to be of significant size	Overhangs from neighboring property (west), codominant beginning at 6 feet, generally good condition, dsh estimated due to blackberry brambles



REVISION	DATE	BY	DESCRIPTION
1	4/12/22	SYM	RESPONSE TO CITY COMMENTS
2	3/16/23	SYM	REVISE TREE INVENTORY TABLE, TREE NUMBERING, SITE PLAN

PACE
An Engineering Services Company
11255 Kirkland Way, Suite 300
Kirkland, WA 98033
p. 425.827.2014 f. 425.827.5043
www.paceeng.com

DAVID B. ANDERSON
STATE OF WASHINGTON
2888
REGISTERED
PROFESSIONAL ENGINEER

DHEERAJ KONERU
7002 93RD AVENUE SE
MERCER ISLAND, WA 98040

KONERU
SHORT PLAT (21-008)
6610 EAST MERCER WAY
MERCER ISLAND, WA 98040

TREE RETENTION PLAN

VERIFY SCALE
BAR IS ONE INCH ON ORIGINAL DRAWING.
IF NOT ONE INCH ON THIS SHEET, ADJUST SCALES ACCORDINGLY.

SCALE: 1"=20'
DATE: 07/20/21

DESIGNED BY: MA
CHECKED BY: JA

PACE PROJECT NO. 21436.00

L1.0

FILE NAME: P:\WP21\21436_KONERU_RESIDENCE\DWG\ENGINEERING\21436_TREE.DWG
USER: JAVIER
DATE: 7/16/2023 1:42 PM
XREF FILES: 21436_BDR.DWG 21436_SFR.DWG 21436_SITE.DWG 21436_MATCH.DWG 21436_SD.DWG 21436_WA.DWG 21436_SS.DWG 9433-11-SRW.DWG

CALL BEFORE
YOU DIG 811
UNDERGROUND SERVICE (USA)